



COMMERCIAL PRODUCTS 2021



*ARGO Sherp SERIES*





***KNOW NO BOUNDARIES.***

It's not what you say, it's what you do. At ARGO, we have been retooling our entire company for the last few years to build on a strong 50-year foundation. Every day we Know No Boundaries — a collective mindset that motivates everyone at ARGO to dream big and explore what's next. Our common goal is to create a future-forward, innovative and unique brand that gets you excited. This year we are accelerating our brand momentum right out of the gate with the introduction of ARGO Sherp. Buckle up, it's going to be a helluva year.



***WE ONLY WRITE NONFICTION.***

This exciting story is true — and really big. It's hard to ignore. ARGO, the worldwide leader for amphibious Extreme Terrain Vehicles (XTVs), is pleased to announce it has partnered with SHERP® to expand its current offering of commercial amphibious XTVs to include the all-new ARGO Sherp line of Utility Task Vehicles (UTVs). The new 2021 Commercial Series lineup is fully loaded with off-the-grid capabilities and technology to go where others can't.







## DOESN'T TAKE NO FOR AN ANSWER.

These are lean, mean, go-anywhere driving machines. The ARGO Sherp Pro Series UTVs are extremely lightweight to power you through the most extreme environments and the nastiest weather conditions. This contributes to increased cross-country capability and ease of equipment transportation between point A and point B. Be confident of going way the heck out there. This commercial warrior can't fly to your job site, but it can safely go as the crow flies, saving you valuable time and resources. Yes!

### GO ANYWHERE CAPABILITIES

---

- Conquers Any Surface
- Fully Amphibious
- Plows Through Mud
- Moves Easily Over Snow
- Climbs Out of the Water onto Ice
- Sails Smooth on Sand
- Cruises Through Swamps
- Overcomes Fallen Trees
- Dominates Boulders







Fully Amphibious, Propelled by Tires



Climb 35-Degree Slopes



Carry up to 9 People



## VERSATILITY IS ITS SUPERPOWER.

The range of commercial applications is as remarkable as the performance of this off-road superhero. No matter if you talk to mining crew chiefs or chief executive officers, the powerful advantages of the ARGO Sherp Pro Series are quite consistent. This amphibious asset can get your personnel to hard-to-reach destinations much quicker, safer and easier. Plus, it minimizes your environmental footprint due to its ultra-low-pressure tires. There's only one tiny disadvantage — the conversation about who gets to drive.

### COMMERCIAL APPLICATIONS

---

- Utilities/Powerlines
- Oil & Gas
- Search & Rescue
- Drilling & Pipeline
- Mining & Exploration
- Government
- Forestry
- Humanitarian
- Construction
- Recreation
- Thrill Seekers
- Custom Solutions





Oil & Gas



Utilities/Powerlines



Mining & Exploration



A close-up, low-angle shot of the rear of an ARGO Sherp vehicle. The focus is on the massive, treaded tires, which are covered in mud. The vehicle's body is white with orange and grey accents. The background shows a cloudy sky and a wet, reflective surface.

ARGO Sherp SERIES

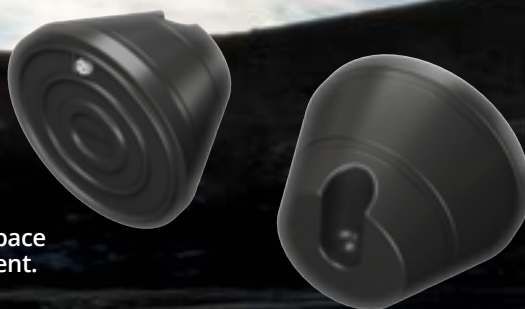
## **ENGINEERING EXCITEMENT WAS A HAPPY BYPRODUCT.**

Hearing someone's first reaction to an ARGO Sherp never gets old. Yes, we build excitement as well as design superior functionality. These rubber monsters will catch your eye, but what these tires can achieve is jaw dropping. It takes less than 30 seconds to reach the operating tire pressure using exhaust gas. Even more impressive? You're able to change tire pressure on the move, properly adapting them to various types of surfaces for the most efficient travel mode. Inflated or halfway deflated, you'll be frickin' elated when you reach those so-called impassable places on your GPS.



### **WHEEL CANISTER FUEL TANKS**

Special canister fuel tanks embedded in each wheel can significantly increase self-sustainability and drastically increase cruising range while keeping the internal space free for storing supplies, tools and equipment. Total additional diesel fuel capacity for the ARGO Sherp Pro XT is 61.2 gallons (232 L).



### **TUBELESS ULTRA-LOW-PRESSURE TIRES**

The reliability, strength and durability of our patented suspension system (including tires and wheels that are lightweight and elastic), creates a high level of adhesion to the ground. The tires are self-inflating for optimum traction in snow, water, sand, mud or on hard surfaces. The full inflation cycle takes 30 seconds to reach full pressure.



Unique Tire Tread Propels Vehicle from Water to Ice



Adjustable Tire Pressure Right from the Cab, Using the Engine Exhaust Gases



Maximum Speed 25 MPH



*ARGO Sherp SERIES*

## ***DESIGNED TO OUTSMART MOTHER NATURE.***

Tough terrain and unbearable weather conditions can wreak havoc getting the job done on time. The ARGO Sherp Series uses purposeful industrial design and innovative technology to make your life more predictable in the middle of nowhere. Maintenance or repairs can be performed directly from the passenger compartment, keeping personnel sheltered from harsh external elements. Extreme comfort will exceed expectations no matter where you sit inside. Every inch of these gentle giants have been tested to provide unmatched reliability and peace of mind.

## ***SAFETY IS OUR HIGHEST PRIORITY.***

Each model is built with a Certified ISO 3471 Roll-Over Protection Structure (ROPS) to safeguard the vehicle from heavy damage and to avoid injuries.







Decol® Steel Flat Bottom



Aluminum Lightweight Cab



Within-Reach Fingertip Controls





*ARGO Sherp SERIES*

***THERE'S ABSOLUTELY  
NO ROOM FOR IFS, ANDS  
OR BUTS OUT HERE.***

Every inch counts when huge boulders, steep ridges, fallen trees and deep ravines try to block your path. ARGO Sherp Series is your go-to partner for challenging environments, especially the one you grind in every day. Our hydraulic skid steering system make turning easier and maneuvering effortless to turn no matter what terrain is out your window. With a low center of gravity, you'll be confident your team can safely move wherever the next opportunity exists. Now let's get to work.





Doosan® Diesel Engines Are Powerful, Reliable and Fuel Efficient with Low Noise and Vibration



Hydraulic Skid Steering System Provides Superior Maneuverability



Unlike Hydraulic Motors and Belt Drives, Using Gears and Oil Bath Chains Provide Superior Reliability Under Extreme Conditions



## LIVES UP TO THE VISUAL HYPE.

Bigger. Bolder. Beastier. These three powerful statements set the course for our team when designing the ARGO Sherp Pro XT. It gives you more technology, improved innovative features and, of course, an overall larger vehicle to enhance your total experience. Inch by inch, you'll see nothing was overlooked. The high-quality craftsmanship is second to none, inside and out. And if you're lucky enough to drive the ARGO Sherp Pro XT, you might never get out of the redesigned driver's seat — comfort is king.

### ARGO Sherp PRO XT KEY FEATURES

- Eco-Friendly Doosan D18 Diesel Engine
- Pneumocirculating Suspension
- Smooth Hydraulic Skid Steering
- 71" Tubeless Ultra-Low-Pressure Tires
- Wheel Canister Fuel Tanks
- Enclosed Oil Chain Lubrication Bath
- Back-up Camera with Alarm
- LED Hi/Lo Beam Headlights
- Loading Capacity 2,645 lbs.
- Three-Point Safety Seat Belts
- Up to 9 Passengers with Optional Seats







Overcome Obstacles with 24" of Ground Clearance



Wide Windshield Visibility



Impressive Strength and Durability with 71" Tires



## MOVING MOUNTAINS CAN NOW BE A REALITY.

Pulling off extraordinary challenges takes grit, guts and sheer power. It also requires highly-motivated personnel, the right equipment and critical supplies. The ARGO Sherp Ark can move just about anything or anyone to accomplish the most extreme jobs or missions. The three-axis multi-powered articulated steering allows it to overcome multi-level obstacles. The intuitive steering controls handle the front section of the ARGO Sherp Ark to rise and twist, so it can easily gain traction to climb. It's time to load up and see what you can accomplish.

### ARGO SHERP ARK XTX & XTZ KEY FEATURES

- Eco-friendly Doosan D24 Diesel Engine
- Pneumocirculating Suspension
- Multi-power Articulated Steering
- 63" Tubeless Ultra-Low-Pressure Tires
- Wheel Canister Fuel Tanks
- Enclosed Oil Chain Lubrication Bath
- LED Hi/Lo Beam Headlights
- Digital Inclinometer for Critical Tilt Angles
- Ark XTX Loading Capacity 7500 lbs.
- Ark XTZ Loading Capacity of up to 22 People
- Back-up Camera with Alarm
- Three-Point Safety Seat Belts



### ARGO SHERP ARK XTZ

The enclosed personnel mover is designed to carry groups of people through extreme conditions. Up to 22 passengers. (4 in front and 18 in the rear)



### ARGO SHERP ARK XTX

The open universal platform is ideal when you need to transport heavy cargo or equipment to challenging jobsites.





7500 lbs. Loading Capacity on the Flat Deck



Climb and Descend 40-Degree Slopes



Loading Capacity up to 22 People



## A RESCUE MISSION IS YOUR MISSION.

People in the line of duty have a higher calling. Bravery runs in their veins to make sure tragedy is avoided. When powerful elements like fire, floods or deep snow stand in their way, they partner with another everyday hero — the Aurora Responder XTV. Pure power and performance match its ability to provide rugged stability for the injured on its built-in stretcher mount. The Aurora Responder is ready for any emergency and built to come back safely.

### AURORA RESPONDER KEY FEATURES

- 850 Series (33HP EFI) V-Twin Engine
- Admiral Transmission with Triple Differential
- ARGO Progressive Steering (APS)
- 25" XT117 Tires
- 9" AirLock™ Steel Rims
- Stretcher Mount
- Front and Rear Flat Floor with Rubber Mats
- Dual Hi/Lo Projector Beam Headlights
- Heat-Reflective Firewall
- Premium Multi-Function Gauge
- Premium HDPE Body Plastics
- Available with ROPS







Responder Shown with Accessory Tracks



Accessory Stretcher Shown  
is Easily Removed Without Tools



Split Seats



Front and Rear Flat Floors



## THE DIFFERENCE BETWEEN CAN AND CAN'T.

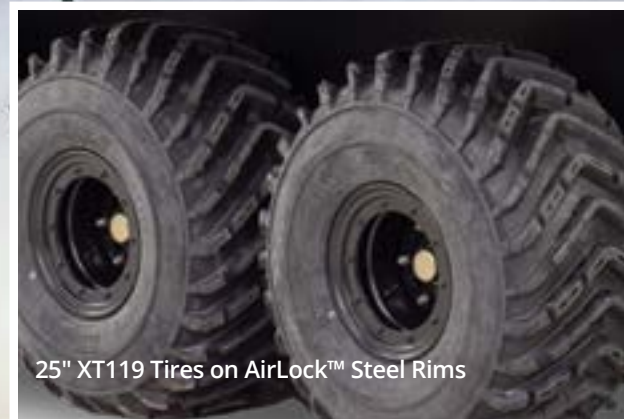
When you have a critical job that needs to get done, you can't call your boss and say, "We can't get there." That's inexcusable. The new Conquest Utility XTVs give you the can-do confidence as soon as you fire up the new 800 V-Twin EFI Liquid Cooled or 950 V-Twin EFI Fan Cooled Engine. Pack in your heavy-duty equipment, because the multipurpose Admiral transmission provides an ideal combination of smooth steering and constant all-wheel traction. Plus, with our new 25" XT119 tires and 9" AirLock™ steel rims, unexpected wet and muddy obstacles are the fun part of your job.

### CONQUEST PRO KEY FEATURES

- 800 Series (30HP EFI L/C) or 950 Series (40HP EFI F/C) V-Twin Engine
- Admiral Transmission
- 25" XT119 Tires
- 9" AirLock™ Steel Rims
- Auto Chain Lubrication
- Front Flat Floor
- Dual Hi/Lo Projector Beam Headlights
- Dash with Multi-Functional Gauge
- Oil-Filled Axles
- Commercial Brushguard with 4,500 lbs. Winch
- Premium HDPE Body Plastics
- 50 AMP Max Output Alternator







25" XT119 Tires on AirLock™ Steel Rims



4,500 lbs. Winch



Roll-Over Protection Structure (ROPS)  
with Accessory Clear Top and Windshield



## ARGO Sherp PRO XT SPECS



### ARGO Sherp PRO XT

|                                    |  |
|------------------------------------|--|
| ENGINE MAKE                        | DOOSAN                                     |
| DISPLACEMENT                       | 1.8 L                                      |
| FUEL TYPE                          | DIESEL                                     |
| CYLINDER                           | 3  |
| EMISSION STANDARDS                 | EPA, STAGE 5/TIER 4 FINAL                  |
| DOC                                | DOC+DPF/DOC ONLY                           |
| COOLING SYSTEM                     | LIQUID                                     |
| HORSEPOWER - MAX                   | 55 HP (41 kW)                              |
| TORQUE - MAX                       | 190 Nm                                     |
| FUEL CONSUMPTION                   | 1.3 - 2.2 GAL/H (5.8 L/H)                  |
| VOLTAGE                            | 12 V                                       |
| ALTERNATOR CAPACITY                | 140 AMP                                    |
| STARTING                           | ELECTRIC                                   |
| BATTERY TYPE - MAIN                | LEAD ACID                                  |
| BATTERY TYPE - BACKUP              | LEAD ACID                                  |
| TRANSMISSION TYPE                  | 6 SPEED MANUAL                             |
| FINAL DRIVE                        | ENCLOSED CHAINS IN OIL BATH                |
| STEERING                           | TWO LEVER HYDRAULIC SKID STEERING          |
| PAYLOAD                            | 2640 LBS (1200 KG)                         |
| PEOPLE CAPACITY                    | 2 STANDARD, UP TO 7 OPTIONAL               |
| CLIMB/DESCEND GRADE - MAX          | 35 DEGREES                                 |
| SIDEHILL GRADE - MAX               | 30 DEGREES                                 |
| OVERALL LENGTH                     | 156" (3984 MM)                             |
| OVERALL WIDTH                      | 101" (2570 MM)                             |
| OVERALL HEIGHT                     | 112" (2846 MM)                             |
| GROUND CLEARANCE                   | 24" (600 MM)                               |
| WHEELBASE                          | 86" (2200 MM)                              |
| TOWING CAPACITY                    | 5170 LBS (2350 KG)                         |
| DRY WEIGHT                         | 5280 LBS (2400 KG)                         |
| FUEL CAPACITY - MAIN               | 25 GAL (95 L)                              |
| FUEL CAPACITY - CANNISTERS IN RIMS | 15.3 GAL X 4 = 61.2 GAL (58 L X 4 = 232 L) |
| INTERIOR VOLUME - OVERALL          | 275.5 ft3 (7.8 m3)                         |
| INTERIOR VOLUME - FRONT            | 70.5 ft3 (2.0 m3)                          |
| INTERIOR VOLUME - REAR             | 205 ft3 (5.8 m3)                           |
| SPEED - MAX LAND                   | 25 MPH (40 KM/H)                           |
| SPEED - MIN LAND                   | 1 MPH (2 KM/H)                             |
| SPEED - WATER                      | 4 MPH (6 KM/H)                             |

|                                       |  |
|---------------------------------------|--|
| SUSPENSION                            | ADJUSTABLE PNEUMATIC CIRCULATING TIRES |
| BRAKES                                | DUAL DISC                              |
| PARKING BRAKES                        | HANDBRAKE                              |
| TIRES                                 | TUBELESS, ULTRA-LOW PRESSURE           |
| TIRE SIZE                             | 71 X 23-25 (1800 X 600-635)            |
| WHEELS                                | ALUMINUM BEADLOCK                      |
| GROUND PRESSURE                       | 0.9 - 2.1 PSI (0.07 - 0.15 KG/cm2)     |
| PRESSURE CONTROL                      | ADJUSTABLE BY EXHAUST GAS              |
| CABIN                                 | ALUMINUM HARD TOP                      |
| FRAME                                 | STEEL GALVANIZED                       |
| ROPS (CERTIFICATION)                  | FULL ROPS (ISO 3471)                   |
| FRONT SEATS                           | 2 SEATS WITH 3 POINT SEATBELTS         |
| REAR SEATS - 2 FRONT FACING           | OPTIONAL                               |
| REAR SEATS - 4 FRONT FACING           | OPTIONAL                               |
| REAR SEATS - 6 SIDE AND 1 REAR FACING | OPTIONAL                               |
| GAUGE                                 | MULTIFUNCTIONAL DIGITAL                |
| REVIEW CAMERA                         | STANDARD                               |
| HEATER                                | STANDARD                               |
| AIR CONDITIONER                       | OPTIONAL                               |
| HEADLIGHTS                            | LED - HI/LO BEAM                       |
| LIGHTBAR - REAR                       | OPTIONAL                               |
| LIGHTBAR - FRONT                      | OPTIONAL                               |
| BUMPERS - FRONT                       | STANDARD                               |
| BUMPERS - REAR                        | STANDARD                               |
| HITCH                                 | 2" RECEIVER - FRONT AND REAR           |
| WINCH                                 | OPTIONAL                               |
| BILGE PUMP                            | STANDARD                               |
| GLOVE BOX                             | STANDARD                               |
| CUP HOLDERS                           | STANDARD                               |
| STORAGE BOXES - UNDER FLOOR           | STANDARD                               |
| LOCKERS - 2 PCS                       | OPTIONAL                               |
| MIRRORS                               | STANDARD                               |
| WINDOW - REAR SIDE 2 PCS              | OPTIONAL                               |
| WINDOW - REAR SIDE 4 PCS              | OPTIONAL                               |
| WARRANTY                              | 24 MONTHS OR 1,000 OPERATION HOURS     |
| COLOR                                 | BLACK                                  |




**ARGO Sherp ARK XTX|XTZ**

|                                    |   |
|------------------------------------|---|
| ENGINE MAKE                        | DOOSAN  |
| DISPLACEMENT                       | 2.4 L   |
| FUEL TYPE                          | DIESEL  |
| CYLINDER                           | 4   |
| EMISSION STANDARDS                 | EPA, STAGE 5/TIER 4 FINAL   |
| DOC                                | DOC+DPF/DOC ONLY  |
| COOLING SYSTEM                     | LIQUID  |
| HORSEPOWER - MAX                   | 74 HP (55 kW)   |
| TORQUE - MAX                       | 320 Nm  |
| FUEL CONSUMPTION                   | 2-3 GAL/H (8-12 L/H)  |
| VOLTAGE                            | 12 V  |
| ALTERNATOR CAPACITY                | 140 AMP   |
| STARTING                           | ELECTRIC  |
| BATTERY TYPE - MAIN                | LEAD ACID   |
| BATTERY TYPE - BACKUP              | LEAD ACID   |
| TRANSMISSION TYPE                  | 5 SPEED MANUAL  |
| FINAL DRIVE                        | ENCLOSED CHAINS IN OIL BATH                                       |
| STEERING                           | STEERING WHEEL, MULTI-POWER ARTICULATED (3 AXIS)                  |
| PAYLOAD                            | 7500 LBS (3400 KG)   4410 LBS (2000 KG)                           |
| PEOPLE CAPACITY                    | XTX - 4/XTZ - 22 (4 IN FRONT SECTION & 18 IN REAR SECTION)        |
| CLIMB/DESCEND GRADE - MAX          | 40 DEGREES  |
| SIDEHILL GRADE - MAX               | 30 DEGREES  |
| OVERALL LENGTH                     | 380" (9632 MM)  |
| OVERALL WIDTH                      | 100" (2520 MM)  |
| OVERALL HEIGHT                     | 102" (2605 MM)   114" (2900 MM)                                   |
| GROUND CLEARANCE                   | 24" (600 MM)  |
| WHEELBASE                          |   |
| TOWING CAPACITY                    | 8818 LBS (4000 KG)  |
| DRY WEIGHT                         | 9480 LBS (4300 KG)   11,865 LBS (5382 KG)                         |
| FUEL CAPACITY - MAIN               | 48 GAL (8 GAL FRONT, 40 GAL REAR (180 L (30 L FRONT, 150 L REAR)) |
| FUEL CAPACITY - CANNISTERS IN RIMS | 15.3 GAL X 10 = 153 GAL (58 L X 10 = 580 L)                       |
| INTERIOR VOLUME - OVERALL          | 218 ft3 (9m3)   710 ft3 (20.1 m3)                                 |
| INTERIOR VOLUME - FRONT            | 208 ft3 (5.9 m3)  |
| INTERIOR VOLUME - REAR             | 109.5 ft3 (3.1 m3)   501.5ft3 (14.2 m3)                           |
| SPEED - MAX LAND                   | 18 MPH (30KM/H)   |
| SPEED - MIN LAND                   | 1 MPH (2 KM/H)  |
| SPEED - WATER                      | 4 MPH (6 KM/H)  |

|                                       |  |
|---------------------------------------|--|
| SUSPENSION                            | ADJUSTABLE PNEUMATIC CIRCULATING TIRES |
| BRAKES                                | DUAL DISC                              |
| PARKING BRAKES                        | HANDBRAKE                              |
| TIRES                                 | TUBELESS, ULTRA-LOW PRESSURE           |
| TIRE SIZE                             | 63 X 23-25 (1600 X 600-635)            |
| WHEELS                                | ALUMINUM BEADLOCK                      |
| GROUND PRESSURE                       | 0.9 - 2.1 PSI (0.07 - 0.15 KG/cm2)     |
| PRESSURE CONTROL                      | ADJUSTABLE BY EXHAUST GAS              |
| CABIN                                 | ALUMINUM HARD TOP                      |
| FRAME                                 | STEEL GALVANIZED                       |
| ROPS (CERTIFICATION)                  | FULL ROPS (ISO 3471)                   |
| FRONT SEATS                           | 2 SEATS WITH 3 POINT SEATBELTS         |
| REAR SEATS - 2 FRONT FACING           | STANDARD                               |
| REAR SEATS - 4 FRONT FACING           | N/A                                    |
| REAR SEATS - 6 SIDE AND 1 REAR FACING | N/A                                    |
| GAUGE                                 | MULTIFUNCTIONAL DIGITAL                |
| REVIEW CAMERA                         | STANDARD                               |
| HEATER                                | STANDARD                               |
| AIR CONDITIONER                       | OPTIONAL                               |
| HEADLIGHTS                            | LED - HI/LO BEAM                       |
| LIGHTBAR - REAR                       | OPTIONAL                               |
| LIGHTBAR - FRONT                      | OPTIONAL                               |
| BUMPERS - FRONT                       | STANDARD                               |
| BUMPERS - REAR                        | STANDARD                               |
| HITCH                                 | 2" RECEIVER - FRONT AND REAR           |
| WINCH                                 | OPTIONAL                               |
| BILGE PUMP                            | STANDARD                               |
| GLOVE BOX                             | STANDARD                               |
| CUP HOLDERS                           | OPTIONAL                               |
| STORAGE BOXES - UNDER FLOOR           | STANDARD                               |
| LOCKERS - 2 PCS                       | OPTIONAL                               |
| MIRRORS                               | STANDARD                               |
| WINDOW - REAR SIDE 2 PCS              | OPTIONAL                               |
| WINDOW - REAR SIDE 4 PCS              | OPTIONAL                               |
| WARRANTY                              | 24 MONTHS OR 2,000 OPERATION HOURS     |
| COLOR                                 | BLACK                                  |



## AURORA RESPONDER SPECS



### AURORA 850 SX RESPONDER 8X8

|                           |  |
|---------------------------|--|
| FUEL SYSTEM               | EFI                                    |
| CYLINDER                  | 2                                      |
| COOLING SYSTEM            | FAN COOLED                             |
| HORSEPOWER - MAX          | 33 HP (25kW)                           |
| VOLTAGE                   | 12 V                                   |
| ALTERNATOR CAPACITY       | 50 AMP                                 |
| STARTING                  | ELECTRIC                               |
| BATTERY TYPE - MAIN       | LEAD ACID                              |
| TRANSMISSION              | ADMIRAL - CVT                          |
| DRIVE BELT                | HEAVY DUTY                             |
| FINAL DRIVE               | CHAINS                                 |
| AUTO CHAIN LUBE           | OPTIONAL                               |
| STEERING                  | HANDLEBAR - ARGO PROGRESSIVE STEERING  |
| PAYLOAD - LAND            | 850 LBS (385 KG)                       |
| PAYLOAD - WATER           | 650 LBS (295 KG)                       |
| PEOPLE CAPACITY           | 4                                      |
| CLIMB/DESCEND GRADE - MAX | 30 DEGREES                             |
| SIDEHILL GRADE - MAX      | 30 DEGREES                             |
| OVERALL LENGTH            | 126" (3200 MM)                         |
| OVERALL WIDTH             | 60" (1524 MM)                          |
| OVERALL HEIGHT            | 51" (1295 MM)                          |
| GROUND CLEARANCE          | 10" (254 MM)                           |
| TOWING CAPACITY           | 1800 LBS (816 KG)                      |
| DRY WEIGHT                | 1680 LBS (762 KG)                      |
| FUEL CAPACITY - MAIN      | 7.1 GAL (27 L)                         |
| SPEED - MAX LAND          | 20 MPH (32 KM/H)                       |
| SPEED - WATER             | 3 MPH (5 KM/H)                         |
| SUSPENSION                | LOW-PRESSURE TIRES WITH AIRLOCK WHEELS |
| BRAKES                    | HYDRAULIC                              |
| PARKING BRAKE             | HANDBRAKE                              |
| TIRES                     | TUBELESS, EXTRA-LOW PRESSURE           |
| TIRE SIZE                 | 25 X 12-9 ARGO XT 117                  |
| WHEELS                    | STEEL AIRLOCK                          |
| ROPS (CERTIFICATION)      | OPTIONAL                               |
| REAR MESH                 | N/A                                    |
| ROOF                      | OPTIONAL                               |
| FRONT SEATS               | BENCH - SEATING FOR 2                  |
| GAUGE                     | MULTIFUNCTIONAL DIGITAL                |
| HEATER                    | N/A                                    |
| HEADLIGHTS                | PROJECTOR - HI/LO BEAM                 |
| BUMPERS - FRONT           | STANDARD                               |
| FRONT RACK                | OPTIONAL                               |
| FULL LENGTH SKID PLATE    | STANDARD                               |
| HITCH                     | STANDARD                               |
| WINCH                     | 3500 LBS                               |
| POWER DUMP BOX            | N/A                                    |
| STORAGE BOX - UNDER SEAT  | STANDARD                               |
| BILGE PUMP                | STANDARD                               |
| GLOVE BOX                 | N/A                                    |
| CUP HOLDERS               | STANDARD                               |
| STRETCHER FRAME           | STANDARD                               |
| ENTRY STEP                | OPTIONAL                               |
| WARRANTY                  | 12 MONTH                               |
| COLOR                     | RED OR ORANGE                          |



### AURORA 850 SX-R RESPONDER 8X8

|                           |  |
|---------------------------|--|
| FUEL SYSTEM               | EFI                                    |
| CYLINDER                  | 2                                      |
| COOLING SYSTEM            | FAN COOLED                             |
| HORSEPOWER - MAX          | 33 HP (25kW)                           |
| VOLTAGE                   | 12 V                                   |
| ALTERNATOR CAPACITY       | 50 AMP                                 |
| STARTING                  | ELECTRIC                               |
| BATTERY TYPE - MAIN       | LEAD ACID                              |
| TRANSMISSION              | ADMIRAL - CVT                          |
| DRIVE BELT                | HEAVY DUTY                             |
| FINAL DRIVE               | CHAINS                                 |
| AUTO CHAIN LUBE           | OPTIONAL                               |
| STEERING                  | HANDLEBAR - ARGO PROGRESSIVE STEERING  |
| PAYLOAD - LAND            | 610 LBS (276 KG)                       |
| PAYLOAD - WATER           | 410 LBS (186 KG)                       |
| PEOPLE CAPACITY           | 4                                      |
| CLIMB/DESCEND GRADE - MAX | 30 DEGREES                             |
| SIDEHILL GRADE - MAX      | 30 DEGREES                             |
| OVERALL LENGTH            | 126" (3200 MM)                         |
| OVERALL WIDTH             | 60" (1524 MM)                          |
| OVERALL HEIGHT            | 51" (1295 MM)                          |
| GROUND CLEARANCE          | 10" (254 MM)                           |
| TOWING CAPACITY           | 1800 LBS (816 KG)                      |
| DRY WEIGHT                | 1940 LBS (880 KG)                      |
| FUEL CAPACITY - MAIN      | 7.1 GAL (27 L)                         |
| SPEED - MAX LAND          | 20 MPH (32 KM/H)                       |
| SPEED - WATER             | 3 MPH (5 KM/H)                         |
| SUSPENSION                | LOW-PRESSURE TIRES WITH AIRLOCK WHEELS |
| BRAKES                    | HYDRAULIC                              |
| PARKING BRAKE             | HANDBRAKE                              |
| TIRES                     | TUBELESS, EXTRA-LOW PRESSURE           |
| TIRE SIZE                 | 25 X 12-9 ARGO XT 117                  |
| WHEELS                    | STEEL AIRLOCK                          |
| ROPS (CERTIFICATION)      | STANDARD                               |
| REAR MESH                 | N/A                                    |
| ROOF                      | OPTIONAL                               |
| FRONT SEATS               | BENCH - SEATING FOR 2                  |
| GAUGE                     | MULTIFUNCTIONAL DIGITAL                |
| HEATER                    | N/A                                    |
| HEADLIGHTS                | PROJECTOR - HI/LO BEAM                 |
| BUMPERS - FRONT           | STANDARD                               |
| FRONT RACK                | OPTIONAL                               |
| FULL LENGTH SKID PLATE    | STANDARD                               |
| HITCH                     | STANDARD                               |
| WINCH                     | 3500 LBS                               |
| POWER DUMP BOX            | N/A                                    |
| STORAGE BOX - UNDER SEAT  | STANDARD                               |
| BILGE PUMP                | STANDARD                               |
| GLOVE BOX                 | N/A                                    |
| CUP HOLDERS               | STANDARD                               |
| STRETCHER FRAME           | STANDARD                               |
| ENTRY STEP                | OPTIONAL                               |
| WARRANTY                  | 12 MONTH                               |
| COLOR                     | RED OR ORANGE                          |





### CONQUEST PRO 800/950 XT

|                           |  |
|---------------------------|--|
| FUEL SYSTEM               | EFI                                    |
| CYLINDER                  | 2                                      |
| COOLING SYSTEM            | LIQUID COOLED   FAN COOLED             |
| HORSEPOWER - MAX          | 30 HP (23 kW)   40 HP (30 kW)          |
| VOLTAGE                   | 12 V                                   |
| ALTERNATOR CAPACITY       | 60 AMP                                 |
| STARTING                  | ELECTRIC                               |
| BATTERY TYPE - MAIN       | LEAD ACID                              |
| TRANSMISSION              | ADMIRAL - CVT                          |
| DRIVE BELT                | HEAVY DUTY                             |
| FINAL DRIVE               | CHAINS                                 |
| AUTO CHAIN LUBE           | STANDARD                               |
| STEERING                  | HANDLEBAR                              |
| PAYLOAD - LAND            | 1203 LBS (546 KG)                      |
| PAYLOAD - WATER           | 503 LBS (228 KG)                       |
| PEOPLE CAPACITY           | 2                                      |
| CLIMB/DESCEND GRADE - MAX | 30 DEGREES                             |
| SIDEHILL GRADE - MAX      | 30 DEGREES                             |
| OVERALL LENGTH            | 125" (3175 MM)                         |
| OVERALL WIDTH             | 65" (1651 MM)                          |
| OVERALL HEIGHT            | 49" (1245 MM)                          |
| GROUND CLEARANCE          | 9" (229 MM)                            |
| TOWING CAPACITY           | 2000 LBS (907 KG)                      |
| DRY WEIGHT                | 1735 LBS (787 KG)   1785 LBS (810 KG)  |
| FUEL CAPACITY - MAIN      | 9.5 GAL (36 L)                         |
| SPEED - MAX LAND          | 17 MPH (27 KM/H)                       |
| SPEED - WATER             | 3 MPH (5 KM/H)                         |
| SUSPENSION                | LOW-PRESSURE TIRES WITH AIRLOCK WHEELS |
| BRAKES                    | HYDRAULIC                              |
| PARKING BRAKE             | HANDBRAKE                              |
| TIRES                     | TUBELESS, EXTRA-LOW PRESSURE           |
| TIRE SIZE                 | 25 X 12-9 ARGO XT 119                  |
| WHEELS                    | STEEL AIRLOCK                          |
| ROPS (CERTIFICATION)      | N/A   STANDARD                         |
| REAR MESH                 | N/A   STANDARD                         |
| ROOF                      | N/A   STANDARD                         |
| FRONT SEATS               | BENCH - SEATING FOR 2                  |
| GAUGE                     | MULTIFUNCTIONAL DIGITAL                |
| HEATER                    | OPTIONAL                               |
| HEADLIGHTS                | PROJECTOR - HI/LO BEAM                 |
| BUMPERS - FRONT           | OPTIONAL   STANDARD                    |
| FRONT RACK                | OPTIONAL                               |
| FULL LENGTH SKID PLATE    | STANDARD                               |
| HITCH                     | STANDARD                               |
| WINCH                     | 4500 LBS                               |
| POWER DUMP BOX            | N/A                                    |
| STORAGE BOX - UNDER SEAT  | STANDARD                               |
| BILGE PUMP                | STANDARD                               |
| GLOVE BOX                 | STANDARD                               |
| CUP HOLDERS               | STANDARD                               |
| STRETCHER FRAME           | N/A                                    |
| ENTRY STEP                | OPTIONAL                               |
| WARRANTY                  | 12 MONTH                               |
| COLOR                     | GREEN OR YELLOW                        |



### CONQUEST PRO 800/950 XT-L

|                           |  |
|---------------------------|--|
| FUEL SYSTEM               | EFI                                    |
| CYLINDER                  | 2                                      |
| COOLING SYSTEM            | LIQUID COOLED                          |
| HORSEPOWER - MAX          | 30 HP (23 kW)   40 HP (30 kW)          |
| VOLTAGE                   | 12 V                                   |
| ALTERNATOR CAPACITY       | 60 AMP   50 AMP                        |
| STARTING                  | ELECTRIC                               |
| BATTERY TYPE - MAIN       | LEAD ACID                              |
| TRANSMISSION              | ADMIRAL - CVT                          |
| DRIVE BELT                | HEAVY DUTY                             |
| FINAL DRIVE               | CHAINS                                 |
| AUTO CHAIN LUBE           | STANDARD                               |
| STEERING                  | HANDLEBAR                              |
| PAYLOAD - LAND            | 1041 LBS (472 KG)   1048 LBS (475 KG)  |
| PAYLOAD - WATER           | N/A                                    |
| PEOPLE CAPACITY           | 2                                      |
| CLIMB/DESCEND GRADE - MAX | 30 DEGREES                             |
| SIDEHILL GRADE - MAX      | 30 DEGREES                             |
| OVERALL LENGTH            | 125" (3175 MM)                         |
| OVERALL WIDTH             | 65" (1651 MM)                          |
| OVERALL HEIGHT            | 80.5" (2045 MM)                        |
| GROUND CLEARANCE          | 9" (229 MM)                            |
| TOWING CAPACITY           | 2000 LBS (907 KG)                      |
| DRY WEIGHT                | 2045 LBS (928 KG)   2095 LBS (950 KG)  |
| FUEL CAPACITY - MAIN      | 9.5 GAL (36 L)                         |
| SPEED - MAX LAND          | 17 MPH (27 KM/H)                       |
| SPEED - WATER             | N/A                                    |
| SUSPENSION                | LOW-PRESSURE TIRES WITH AIRLOCK WHEELS |
| BRAKES                    | HYDRAULIC                              |
| PARKING BRAKE             | HANDBRAKE                              |
| TIRES                     | TUBELESS, EXTRA-LOW PRESSURE           |
| TIRE SIZE                 | 25 X 12-9 ARGO XT 119                  |
| WHEELS                    | STEEL AIRLOCK                          |
| ROPS (CERTIFICATION)      | STANDARD                               |
| REAR MESH                 | STANDARD                               |
| ROOF                      | STANDARD                               |
| FRONT SEATS               | BENCH - SEATING FOR 2                  |
| GAUGE                     | MULTIFUNCTIONAL DIGITAL                |
| HEATER                    | OPTIONAL                               |
| HEADLIGHTS                | PROJECTOR - HI/LO BEAM                 |
| BUMPERS - FRONT           | STANDARD                               |
| FRONT RACK                | OPTIONAL                               |
| FULL LENGTH SKID PLATE    | STANDARD                               |
| HITCH                     | STANDARD                               |
| WINCH                     | 4500 LBS                               |
| POWER DUMP BOX            | N/A                                    |
| STORAGE BOX - UNDER SEAT  | STANDARD                               |
| BILGE PUMP                | STANDARD                               |
| GLOVE BOX                 | STANDARD                               |
| CUP HOLDERS               | STANDARD                               |
| STRETCHER FRAME           | N/A                                    |
| ENTRY STEP                | OPTIONAL                               |
| WARRANTY                  | 12 MONTH                               |
| COLOR                     | GREEN OR YELLOW                        |



### CONQUEST PRO 800/950 XT-X

|                           |  |
|---------------------------|--|
| FUEL SYSTEM               | EFI                                    |
| CYLINDER                  | 2                                      |
| COOLING SYSTEM            | LIQUID COOLED                          |
| HORSEPOWER - MAX          | 30 HP (23 kW)   40 HP (30 kW)          |
| VOLTAGE                   | 12 V                                   |
| ALTERNATOR CAPACITY       | 60 AMP   50 AMP                        |
| STARTING                  | ELECTRIC                               |
| BATTERY TYPE - MAIN       | LEAD ACID                              |
| TRANSMISSION              | ADMIRAL - CVT                          |
| DRIVE BELT                | HEAVY DUTY                             |
| FINAL DRIVE               | CHAINS                                 |
| AUTO CHAIN LUBE           | STANDARD                               |
| STEERING                  | HANDLEBAR                              |
| PAYLOAD - LAND            | 1170 LBS (531 KG)   1120 LBS (508 KG)  |
| PAYLOAD - WATER           | N/A                                    |
| PEOPLE CAPACITY           | 2                                      |
| CLIMB/DESCEND GRADE - MAX | 30 DEGREES                             |
| SIDEHILL GRADE - MAX      | 30 DEGREES                             |
| OVERALL LENGTH            | 125" (3175 MM)                         |
| OVERALL WIDTH             | 65" (1651 MM)                          |
| OVERALL HEIGHT            | 80.5" (2045 MM)                        |
| GROUND CLEARANCE          | 9" (229 MM)                            |
| TOWING CAPACITY           | 2000 LBS (907 KG)                      |
| DRY WEIGHT                | 2065 LBS (937 KG)   2115 LBS (960 KG)  |
| FUEL CAPACITY - MAIN      | 9.5 GAL   36 L                         |
| SPEED - MAX LAND          | 17 MPH (27 KM/H)                       |
| SPEED - WATER             | N/A                                    |
| SUSPENSION                | LOW-PRESSURE TIRES WITH AIRLOCK WHEELS |
| BRAKES                    | HYDRAULIC                              |
| PARKING BRAKE             | HANDBRAKE                              |
| TIRES                     | TUBELESS, EXTRA-LOW PRESSURE           |
| TIRE SIZE                 | 25 X 12-9 ARGO XT 119                  |
| WHEELS                    | STEEL AIRLOCK                          |
| ROPS (CERTIFICATION)      | STANDARD                               |
| REAR MESH                 | STANDARD                               |
| ROOF                      | STANDARD                               |
| FRONT SEATS               | BENCH - SEATING FOR 2                  |
| GAUGE                     | MULTIFUNCTIONAL DIGITAL                |
| HEATER                    | OPTIONAL                               |
| HEADLIGHTS                | PROJECTOR - HI/LO BEAM                 |
| BUMPERS - FRONT           | STANDARD                               |
| FRONT RACK                | OPTIONAL                               |
| FULL LENGTH SKID PLATE    | STANDARD                               |
| HITCH                     | STANDARD                               |
| WINCH                     | 4500 LBS                               |
| POWER DUMP BOX            | STANDARD                               |
| STORAGE BOX - UNDER SEAT  | STANDARD                               |
| BILGE PUMP                | STANDARD                               |
| GLOVE BOX                 | STANDARD                               |
| CUP HOLDERS               | STANDARD                               |
| STRETCHER FRAME           | N/A                                    |
| ENTRY STEP                | OPTIONAL                               |
| WARRANTY                  | 12 MONTH                               |
| COLOR                     | GREEN OR YELLOW                        |

## CONQUEST PRO SERIES SPECS





**GO**  
ANYWHERE

**ARGOxtv.COM**

*Some vehicle applications shown are for demonstration purposes, originating from third parties and not available from ARGO. In all cases vehicle load limits have been considered. Always remain seated while in the ARGO. UTVs and XTVs can be hazardous to operate. Improper use can cause severe injury or death. Riders must wear an approved helmet, and eye protection, protective clothing when operating XTVs and when operating in water always wear a personal floatation device. Use handholds and stay completely inside the vehicle. Each rider must read and understand the operator's manual before riding. Follow all instructions and warnings. Avoid abrupt maneuvers, paved surfaces, hard acceleration when turning, and side hilling; slow down before entering a turn. Never engage in stunt driving. Avoid excessive speeds and be particularly careful on difficult terrain. Never operate on public roads. UTVs and XTVs are designated for off-highway vehicle access only — collisions with cars and trucks can occur. Never drive or ride under the influence of alcohol or drugs. Do not shoot from or lean firearms or bows against the UTV or XTV. ARGO recommends that all riders take training course. When equipped with tracks, Conquest Series models are not fully amphibious; however, water crossing is possible with a fording depth of 26" (660 mm). Along with concerned conservationists everywhere, ARGO urges you to respect public and private lands. Ride only on designated areas or trails. Preserve your future riding opportunities by showing respect for the environment, local laws and the rights of others when riding. All materials and specifications are subject to change without notice. All specifications, claims and information contained within are based on current knowledge and readily available as printed material.*

**PART#: 095-0008** Printed in Canada 01/2021